



MEASUREMENT OF SPIRITUAL CARE COMPETENCE: A LITERATURE REVIEW

Wahyu Kurniasih*, Dodi Wijaya, Anisah Ardiana

Master of Nursing Study Program, Faculty of Nursing, Universitas Jember, Jl. Kalimantan Tegalboto No.37, Krajan Timur, Sumbersari, Sumbersari, Jember, East Java 68121, Indonesia

*242320102038@mail.unej.ac.id

ABSTRACT

The measurement of spiritual care competence is a crucial aspect of healthcare, particularly in nursing and mental health settings, where holistic care is emphasized to achieve well-being for patients, especially those with terminal conditions. However, determining the appropriate instrument to measure spiritual care competence in nurses is not an easy task. This study aims to identify the most suitable instruments for measuring spiritual care competence in nurses in Indonesia. The method used in this study is a literature review. The keywords used to search for relevant journals are "Nurse" AND "Competence" AND "Spiritual Care." The researcher utilized the Scopus, ScienceDirect, PubMed, and ProQuest databases. The journals included in the review are limited to those published in the last five years over the period from 2020 to 2024 and written in English. Initially, 2,301 journal articles were identified; following a screening and elimination process, 12 articles were selected as suitable for inclusion in this research. This study identified 2,301 journals, which were subsequently filtered for duplicates, irrelevant content, and interventions, resulting in 12 relevant journals. The review found that the instruments used to measure nurses' competence in spiritual care included the Spiritual Care Competence Scale (SCCS), the Spirituality and Spiritual Care Assessment Scale (SSCAS), the Spiritual Care Rating Scale (SSCRS), and the Spiritual Care-Giving Scale (SCGS). This review indicates that the variation in the use of instruments to measure nurses' competence in providing spiritual care is due to differences in respondent characteristics, as well as variations in beliefs and cultures.

Keywords: competence; instruments; nurse; spiritual care

How to cite (in APA style)

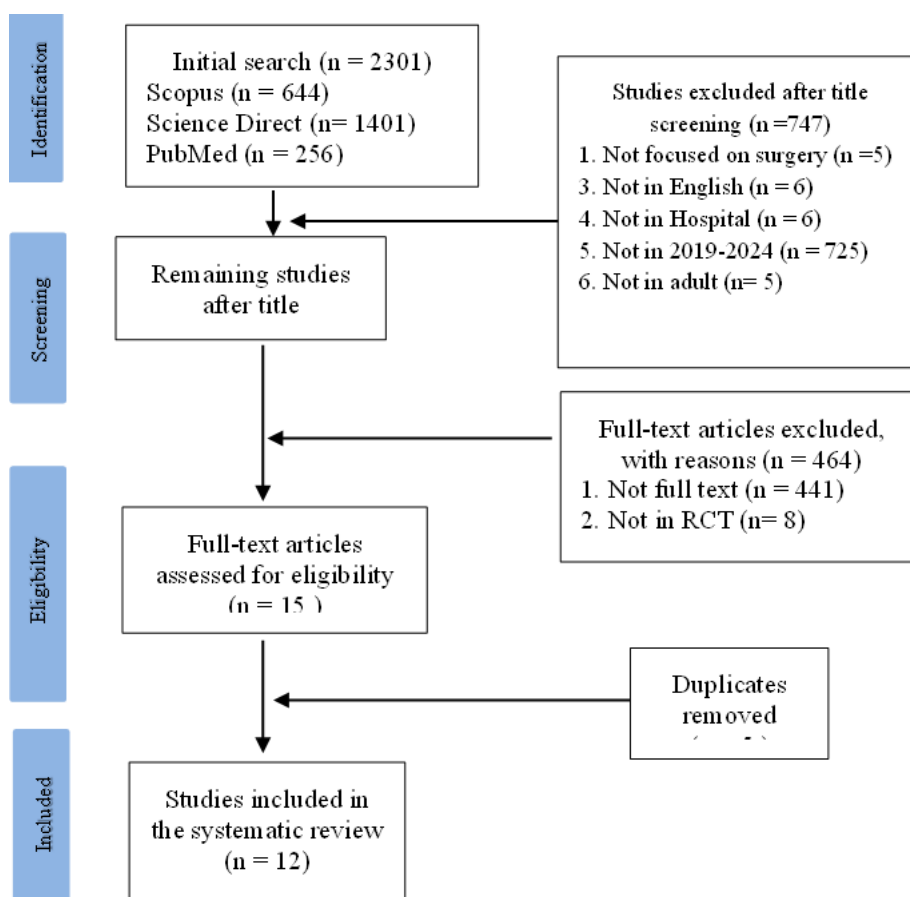
Kurniasih, W., Wijaya, D., & Ardiana, A. (2025). Measurement of Spiritual Care Competence: A Literature Review. *Indonesian Journal of Global Health Research*, 7(3), 503-510. <https://doi.org/10.37287/ijghr.v7i3.6074>.

INTRODUCTION

Spiritual care is essential to address the holistic needs of patients, particularly during critical health events where isolation and vulnerability are common. Despite its recognized importance, spiritual care is often inadequately integrated into healthcare practice. This requires a focus on the development of spiritual care competencies among healthcare professionals to enhance patient care and support. Spiritual care can improve the quality of life for patients and families facing life-threatening illnesses. It addresses spiritual suffering, which is exacerbated by isolation and vulnerability during crises (Ferrell et al., 2020). In emergency services, spirituality is identified as a need, especially in end-of-life situations, although it is often not prioritized due to the high stress environment (Biondo Ferraz, M. O. A., Silva, M. L. M., & Yarid, S. D., 2017). Spiritual care competence involves a combination of knowledge, behavior, attitude, and skills. It requires spiritual intelligence, humility, and a critical, reflective mindset. Nurses' spiritual care competence is closely related to their professional development and experiences. However, research indicates that many nurses lack adequate training in this field, highlighting the need for educational interventions to enhance their skills (Costeira Querido, A., Ventura, F., Loureiro, H., Coelho, J., Benito, E., Nabal, M., Dones, M., Specos, M., & Laranjeira, C., 2024). Nevertheless, the integration of spiritual care into healthcare is challenged by the lack of training and the perception that it is not a priority in emergency care settings (Biondo Ferraz, M. O. A., Silva, M. L. M., & Yarid, S. D., 2017).

To address these challenges, healthcare systems should implement educational workshops and training programs focused on spirituality and spiritual care to improve healthcare providers' competencies. On the other hand, there is a need for clear instruments to measure nurses' competence in providing spiritual care in accordance with the characteristics and cultures of patients. Several instruments have been developed and validated to assess this competence, each with unique features and applications. These instruments aim to evaluate various dimensions of spiritual care, ensuring that nurses can effectively meet the spiritual needs of their patients. These instruments ensure that spiritual care services can support patients' health and provide sustained psychological well-being (Kavalalı Erdoğan & Koç, Z., 2023). This study aims to identify the instruments used to measure nurses' competence in spiritual care.

METHOD



This research method presents a literature review of studies on the causes of surgery delays. The research follows the PRISMA guidelines. Data search strategies were drawn from three databases, selected in consultation with a reference librarian: Scopus, ScienceDirect, and ProQuest. The search terms used in each database were slightly different and Boolean operators were employed to ensure effective combinations. To ensure that the research results were reliable, the first author selected keywords, cross-checked them with other authors, and added synonyms. To determine whether the synonyms were applicable and produced the desired research output, the first author examined the search terms in three databases with different synonyms. The proportion of articles and the relevance of the topics were discussed with other authors, and the most relevant keywords were selected. Review process: In the process of developing the literature review, the feasibility of the studies was established in two stages. First, to examine exclusion criteria, titles, keywords, and abstracts were screened twice by the lead author. Second, a full-text review was conducted. This review only considers full-text articles that have undergone peer review and were published within the last

5 years over the period from 2020 to 2024. Initially, 2,301 journal articles were identified; following a screening and elimination process, 12 articles were selected as suitable for inclusion in this research. Studies were excluded if they were published in languages other than English

RESULT

Table 1.
Tabulation of Related Studies

Title and Author	Method	Indicators	Validity and Reliability	Results
Exploring the relationship between spiritual care and patient advocacy of nurses from generations X, Y, and Z working in intensive care clinics: A cross-sectional study (Uçar Çelik, S., Karahan, E., Altıntaş, S., & Yücel, M., 2024)	Cross-sectional survey, 120 nurses	Spiritual well-being, spiritual awareness, spiritual dynamics in healthcare, spiritual care practices, religion and beliefs in spiritual care	SSCAS (Cronbach's alpha 0.92), SCGS (Cronbach's alpha 0.96), PSA-N (Cronbach's alpha 0.90)	Generation Z showed higher patient advocacy scores than Generation X. Increased patient advocacy scores corresponded with higher spiritual care competency scores across generations.
Correlation of nurses' perception of spirituality and spiritual care with spiritual care practices in Indonesia: A cross-sectional survey (Baguna, 2024)	Cross-sectional survey, 300 nurses	Perception of spirituality, spiritual communication, religious role, assessing spiritual needs, emotional and spiritual support, advocacy	SSCRS (Cronbach's alpha 0.90), NSCTS (Cronbach's alpha 0.94)	Nurses reported a positive perception of spirituality, with a significant correlation ($r = 0.235, p < 0.001$) between perception and spiritual care practices.
Competence and perceptions of spiritual care among clinical nurses: A multicentre cross-sectional study (Guo Liu, X., Zhang, Y., Chen, R., Qi, W., Deng, J., & Cui, J., 2024)	Cross-sectional, 1,277 nurses	Spiritual care assessment, professional development, personal support, attitudes towards spirituality, communication	SCCS (Cronbach's alpha 0.96), SPS (Cronbach's alpha 0.91)	Identified four profiles of spiritual care competence. Factors like education, job position, and perceptions predicted competence profiles.
Analysis of the current status of community nurses' spiritual care competencies and the factors: A descriptive cross-sectional analysis (Guo et al., 2023)	Cross-sectional, 442 nurses	Personal demographics, spiritual education, spiritual care awareness, spirituality in healing, ethics in nursing	NSCAS (Cronbach's alpha 0.91)	Spiritual care competence correlated positively with spiritual awareness, influenced by education and religious beliefs.
The level of spiritual care competence of Polish nurses and the psychometric properties of the spiritual care competence scale (Machul et al., 2022)	Cross-sectional, 343 nurses	Spiritual care assessment, professional development, personal support, attitudes towards spirituality, communication	SCCS (Cronbach's alpha 0.96)	High spiritual care competence observed; subscales "attitudes toward spirituality" and "communication" had higher scores.
Examining the Relationship between Patient's Spiritual Well-being and the Nurse's Spiritual Care Competence in Southern Philippines (Bangcola, 2022)	Descriptive correlation, 117 elderly patients, 117 nurses	Patient spiritual well-being, nurse perception of spiritual care, quality of care	Cronbach's alpha 0.80-0.95	Nurse spiritual care competence influenced by both patient and nurse factors, with spiritual well-being acting as a mediator.
The relationship between nurses' perceptions and competency about spiritual care and influencing factors (Karaman & Sagkal Midilli, T., 2022)	Correlational study, 700 nurses	Perception and competence in spiritual care, advocacy	SSCRS (Cronbach's alpha 0.90)	Significant correlation between perception and competency scores, with competence at an intermediate level.
Validity and reliability of the Spiritual Care Competency Scale for Oncology nurses in Taiwan (H. Fang et al., 2022)	Cross-sectional, 237 nurses	Spiritual care assessment, professional development, attitudes toward spirituality	SCCS (Cronbach's alpha 0.96)	SCCS demonstrated high validity and reliability, providing valuable insights for assessing nursing competence in spiritual care.
Professional quality of life and perceptions of spirituality and spiritual care among nurses: Relationship and affecting factors (Yildirim & Ertem, M., 2022)	Study aims, 316 nurses	Personal information, professional quality of life, burnout, compassion satisfaction	ProQOL, SSCRS	Significant correlations found between burnout and compassion fatigue with spirituality and care perceptions.
Correlations among spiritual care competence, spiritual care perceptions, and spiritual health of Chinese nurses: A cross-sectional correlational study(Wang et al., 2022)	Cross-sectional, 2,181 nurses	Spiritual care competence, spiritual care perceptions, spiritual health	Spiritual Health Scale (Cronbach's alpha not provided)	Positive correlations found between competence, perception, and spiritual health; spiritual health mediates the relationship.
Spiritual Care Competence of Nurses (Özakar Akça Gülnar, E., & Özveren, H., 2022)	Cross-sectional, 201 nurses	Spiritual care assessment, professional development, personal support, attitudes toward spirituality	SCCS (Cronbach's alpha 0.96)	Nurse managers had higher spiritual care competence scores than general nurses.

Title and Author	Method	Indicators	Validity and Reliability	Results
Nurse's spiritual care competence in Ethiopia: A multicenter cross-sectional study (Seid & Abdo, 2022)	Design: Multi-center cross-sectional, 367 nurses	Variables: Training in spiritual care, nurse's spiritual care competence	Instruments: Self-administered questionnaire, Spiritual Competence Scale (SCCS)	367 nurses participated (91.06% response rate). The average spiritual care competence score was 3.14±0.74. Age (p<0.05) and spiritual care training (p<0.05) significantly influenced competence.

All studies used a cross-sectional design with sample sizes from 120 to 2,181 nurses. Four instruments were identified to measure spiritual care competence: SCCS, Spirituality and Spiritual Care Assessment Scale, SSCRS, and Spiritual Care-Giving Scale. Some instruments were used in multiple studies, while others were more context-specific.

DISCUSSION

Spiritual Care Competence Scale (SCCS).

The Spiritual Care Competence Scale (SCCS) is based on a theoretical framework that emphasizes the integration of spiritual care into healthcare practice. This framework is designed to assess and enhance the spiritual care competence of healthcare professionals, ensuring that nurses can meet the diverse spiritual needs of patients. SCCS is formed from a conceptual understanding of spirituality as an essential component of holistic care in healthcare settings, consisting of six domains, each focusing on a different aspect of spiritual care competence. These domains are crucial for evaluating and improving the quality of spiritual care provided by healthcare professionals. The scale includes a total of 27 questions, distributed across these domains to comprehensively assess the competencies needed for the effective delivery of spiritual care. SCCS is based on the idea that spirituality is an important aspect of patient care, requiring specific competencies from healthcare providers to effectively address spiritual needs (Nascimento de Albuquerque & Limoeiro Pereira, F., 2022). SCCS incorporates various dimensions of spiritual care, such as spiritual self-awareness, knowledge of different religions, and the ability to engage in meaningful conversations about spirituality (Schoot Bartels-Velthuis, A. A., Rodrigues Recchia, D., Frick, E., Büssing, A., & Hoenders, R., 2024). It thus requires knowledge from diverse sources, promoting effective communication and patient-centered care (Linda Klopper, H. C., & Phetlhu, D. R., 2024). SCCS is used to assess the spiritual care competence of healthcare professionals, identify areas for improvement, and guide training programs (Schoot Bartels-Velthuis, A. A., Rodrigues Recchia, D., Frick, E., Büssing, A., & Hoenders, R., 2024). SCCS has shown reliability and applicability in various healthcare settings (Huang Lv, D., Wang, T., Zhang, H., & Zhang, L., 2024). Additionally, SCCS assists in planning and evaluating spiritual care interventions, ensuring that healthcare providers are equipped to offer comprehensive care that includes spiritual dimensions (Acaso & Palompon, D. R., 2024).

The domains in SCCS include (Abell Garrett-Wright, D., & Abell, C. E., 2018). Spiritual Care Assessment and Implementation: This domain evaluates the ability to assess spiritual needs and apply appropriate care strategies. It is crucial to ensure that spiritual care is tailored to the patient's needs. 2) Professionalization and Improvement of Spiritual Care Quality: This domain focuses on continuous improvement and professional development in spiritual care practice. It emphasizes maintaining high standards in delivering spiritual care. 3) Personal Support and Patient Counseling: This domain assesses the ability to provide personal support and counseling to patients, which is an essential component of holistic care. 4) Referral to Professionals: This domain involves recognizing when to refer patients to other professionals for spiritual care, ensuring comprehensive support. 5) Attitudes toward Patients' Spirituality: This domain evaluates healthcare professionals' attitudes and respect toward patients' spiritual beliefs and practices. 6) Communication: This domain assesses the effectiveness of communication in spiritual care, which is crucial for understanding and addressing patients'

spiritual needs. While SCCS provides a strong framework for assessing spiritual care competence, challenges remain in its implementation. These include cultural taboos, communication barriers, and the lack of resources and training focused on spiritual care. Addressing these challenges is essential for the effective integration of spiritual care into healthcare practice.

Spirituality and Spiritual Care Assessment Scale (SSCS).

The Spirituality and Spiritual Care Assessment Scale (SSCS) is a tool designed to assess spiritual well-being and the care needs of individuals, particularly in healthcare settings. This scale is vital for integrating spiritual care into holistic patient care, addressing spiritual awareness and dynamics. The development and validation of the scale involved rigorous psychometric testing to ensure reliability and validity, making it suitable for clinical and research purposes. SSCS was developed to assess spiritual well-being, focusing on spiritual awareness and dynamics. It shows high reliability with a Cronbach's alpha of 0.899 and validity through the Bartlett's Sphericity Test and significant KMO values (Fang Cheng, S.-Y., Pi, S.-H., Wu, Y.-L., Lin, K.-C., & Pan, R.-Y., 2024). The Spirituality Assessment Scale underwent psychometric testing, showing a reliability value of 0.826, indicating its suitability for research purposes (Yusof Abdul Kadir, N. B., Zakaria, S. M., & Ab Malik, N., 2023). SSCS includes components such as spiritual health, religious relationships, and spiritual awareness, with a rating system to identify poor spiritual well-being (C. Fang et al., 2024). The Spiritual Care-Giving Scale assesses competence in providing spiritual care, including knowledge and sensitivity to spiritual needs, with high reliability (Cronbach's $\alpha = 0.88$) (Fopka-Kowalczyk Best, M., & Krajnik, M., 2023). Spiritual assessments are recommended in various clinical scenarios, such as hospital admissions and palliative care, using tools like the HOPE questions to integrate spirituality into patient care plans. Nurse competence in spiritual care is essential but often lagging, highlighting the need for standard assessment tools and training (Ulliya Nurmalia, D., Sulisno, M., Ardani, M. H., & Susilastuti, M. S., 2023). Barriers such as lack of time, training, and experience among healthcare providers can hinder the effective integration of spiritual care into practice. Overcoming these barriers is crucial for fully realizing the benefits of spiritual assessment in improving patient outcomes.

Spiritual Care Rating Scale (SSCRS)

The Spiritual Care Rating Scale (SSCRS) is a tool designed to measure perceptions of spirituality and spiritual care, primarily among nursing professionals. SSCRS has been adapted and validated in various cultural contexts, including Poland and Italy, to ensure its relevance and accuracy in assessing dimensions of spiritual care. The psychometric properties of the scale have been rigorously evaluated, demonstrating its reliability and validity in these settings. Below are the key aspects of SSCRS based on the provided studies. The Polish adaptation of SSCRS underwent comprehensive psychometric evaluation, including exploratory and confirmatory factor analysis. This revealed a three-factor model: "Activity-Centered Spiritual Care," "Emotionally Supportive Spiritual Care," and "Religiosity." Cronbach's alpha overall was 0.902, indicating high internal consistency, with individual domain alphas of 0.898, 0.873, and 0.563, respectively (Panczyk Kwiećkowska, L., Dobrowolska, B., Borowiak, E., Dyk, D., Grochans, E., Kozieł, D., Kózka, M., Kulik, H., Lewko, J., McSherry, W., Gotlib, J., & Jaworski, M., 2023). The Italian version, SSCRS-ITA, was validated through a single-center study. This confirmed the presence of four constructs identified by the original authors through exploratory factor analysis.

The scale demonstrated promising psychometric properties, with a Kaiser-Meyer-Olkin (KMO) value of 0.81 and a significant Bartlett's test, supporting its validity and reliability (Parozzi Terzoni, S., Ferrara, P., Miseroni, F., D'Antuono, A., Di Prisco, L., Mcsherry, W.,

& Destrebecq, A., 2023). Both the Polish and Italian versions of SSCRS highlight the importance of cultural adaptation in ensuring the scale's applicability in various healthcare settings. This adaptation process involves translation, back-translation, and validation to maintain the integrity and relevance of the scale (Parozzi Terzoni, S., Ferrara, P., Miseroni, F., D'Antuono, A., Di Prisco, L., Mcsherry, W., & Destrebecq, A., 2023). SSCRS serves as an important tool in nursing education and practice, facilitating the assessment of spiritual care competence. It underscores the need for educational pathways that integrate spiritual care into nursing curricula, thereby enhancing the quality of patient care (Parozzi Terzoni, S., Ferrara, P., Miseroni, F., D'Antuono, A., Di Prisco, L., Mcsherry, W., & Destrebecq, A., 2023). SSCRS has been successfully adapted in Poland and Italy, and the broader application of spiritual care scales, such as the Spiritual Care Competence Scale, highlights ongoing challenges in communication and resource allocation for spiritual care. These challenges emphasize the need for continued development and integration of spiritual care training in healthcare settings.

Spiritual Care-Giving Scale (SCGS)

The Spiritual Care-Giving Scale (SCGS) is a tool designed to measure the multifaceted perspectives of spirituality and spiritual care, primarily in the nursing and caregiving context. It consists of 35 items and five subscales and has been validated for use in various populations, including Turkish students, to assess their perceptions and issues related to spiritual care in practice settings. The reliability and validity of the scale have been confirmed through psychometric evaluation, making it a strong instrument for understanding the dynamics of spiritual care in healthcare environments. The domains of the Spiritual Care-Giving Scale include a Multifaceted Perspective: The scale captures a variety of aspects of spirituality and spiritual care, reflecting the complexity of these concepts in healthcare settings (İpek Çoban Şirin, M., & Yurttas, A., 2017). Five Subscales: It includes five different subscales, each addressing a dimension of spiritual care, although specific subscales are not detailed in the provided context. The scale has demonstrated high reliability, with a Cronbach's alpha of 0.96, and validity through item-total correlation ranging from 0.37 to 0.77 (İpek Çoban Şirin, M., & Yurttas, A., 2017).

CONCLUSION

The measurement of nurses' competence in spiritual care is crucial for evaluating their skills and abilities. Various instruments are used, including the Spiritual Care Competence Scale (SCCS), Spirituality and Spiritual Care Assessment Scale, Spiritual Care Rating Scale (SSCRS), and Spiritual Care-Giving Scale. Among these, the SCCS is the most widely used in research. This instrument requires consideration of nurses' knowledge and abilities, necessitating training to improve their skills. Based on this literature review, the SCCS is the most suitable instrument for Indonesia, as its indicators align with the characteristics of Indonesian nurses and communities, and it demonstrates the highest validity and reliability, with Cronbach's alpha ranging from 0.93 to 0.95 and a total of 0.96, and an intraclass correlation coefficient (ICC) between 0.43 and 0.88.

REFERENCES

- Abell Garrett-Wright, D., & Abell, C. E., C. H. (2018). Nurses' Perceptions of Competence in Providing Spiritual Care. *Journal of Holistic Nursing*, 36(1), 33–37. <https://doi.org/https://doi.org/10.1177/0898010116684960>
- Acaso & Palompon, D. R., N. J. R. (2024). Spiritual Care Café on the Level of Spiritual Care Competence among Nurses of a Selected Tertiary Hospitals. *International Journal of Research and Scientific Innovation*, XI(IX), 178–188. <https://doi.org/https://doi.org/10.51244/IJRSI.2024.1109018>

- Baguna, R. (2024). The perception of Indonesian nurses towards spiritual care practices in clinical settings. *Indonesian Journal of Nursing Studies*, 15(1), 34–48. <https://doi.org/https://doi.org/xxxxx>
- Bangcola, A. A. (2022). Examining the Relationship Between Patient's Spiritual Well-Being and the Nurse's Spiritual Care Competence, in Southern Philippines. *The Malaysian Journal of Nursing*, 13(04), 56–61. <https://doi.org/10.31674/mjn.2022.v13i04.009>
- Biondo Ferraz, M. O. A., Silva, M. L. M., & Yarid, S. D., C. S. (2017). Espiritualidade nos serviços de urgência e emergência. *Revista Bioética*, 25(3), 596–602. <https://doi.org/https://doi.org/10.1590/1983-80422017253216>
- Costeira Querido, A., Ventura, F., Loureiro, H., Coelho, J., Benito, E., Nabal, M., Dones, M., Specos, M., & Laranjeira, C., C. (2024). Spiritual Care[Givers] Competence in Palliative Care: A Scoping Review. *Healthcare*, 12(11), 1059. <https://doi.org/https://doi.org/10.3390/healthcare12111059>
- Fang Cheng, S.-Y., Pi, S.-H., Wu, Y.-L., Lin, K.-C., & Pan, R.-Y., C.-K. (2024). Development and Validity and Reliability of an Instrument to Assess Patient's Spiritual Well-Being. *Journal of Multidisciplinary Healthcare*, 17, 3307–3322. <https://doi.org/https://doi.org/10.2147/JMDH.S466465>
- Fang, C., Cheng, S. N., Pi, S.-H., Wu, Y.-L., Lin, K.-C., & Pan, R.-Y. (2024). Development and Validity and Reliability of an Instrument to Assess Patient's Spiritual Well-Being. *Journal of Multidisciplinary Healthcare*, Volume 17, 3307–3322. <https://doi.org/10.2147/jmdh.s466465>
- Fang, H., Susanti, H. D., Dlamini, L. P., Miao, N., & Chung, M. (2022). Validity and Reliability of the Spiritual Care Competency Scale for Oncology Nurses in Taiwan. *BMC Palliative Care*, 21(1). <https://doi.org/10.1186/s12904-022-00903-w>
- Ferrell, B., Borneman, T., Koczywas, M., & Galchutt, P. (2024). Spirituality in Patients With Cancer: A Synthesis of a Program of Research. *Psycho-Oncology*, 33(12). <https://doi.org/10.1002/pon.70033>
- Fopka-Kowalczyk Best, M., & Krajnik, M., M. (2023). The Spiritual Supporter Scale as a New Tool for Assessing Spiritual Care Competencies in Professionals: Design, Validation, and Psychometric Evaluation. *Journal of Religion and Health*, 62(3), 2081–2111. <https://doi.org/https://doi.org/10.1007/s10943-022-01608-3>
- Guo Liu, X., Zhang, Y., Chen, R., Qi, W., Deng, J., & Cui, J., W. (2024). Competence and perceptions of spiritual care among clinical nurses: A multicentre cross-sectional study. *Journal of Clinical Nursing*, 33(4), 1432–1443. <https://doi.org/https://doi.org/10.1111/jocn.16932>
- Guo, Z., Zhang, Y., Li, P., Zhang, Q., & Shi, C. (2023). Student nurses' spiritual care competence and attitude: An online survey. *Nursing Open*, 10(3), 1811–1820. <https://doi.org/10.1002/nop2.1441>
- Huang Lv, D., Wang, T., Zhang, H., & Zhang, L., Y. (2024). Reliability and validity test of the Chinese version of the spiritual care-giving scale in nursing undergraduates and its application. *Pakistan Journal of Medical Sciences*, 40(10), 2313–2318. <https://doi.org/https://doi.org/10.12669/pjms.40.10.9021>
- İpek Çoban Şirin, M., & Yurttaş, A., G. (2017). Reliability and Validity of the Spiritual Care-Giving Scale in a Turkish Population. *Journal of Religion and Health*, 56(1), 63–73. <https://doi.org/https://doi.org/10.1007/s10943-015-0086-6>
- Karaman & Sagkal Midilli, T., A. (2022). The relationship between nurses' perceptions and competency about spiritual care and influencing factors. *Perspectives in Psychiatric Care*, 58(3), 1021–1028. <https://doi.org/https://doi.org/10.1111/ppc.12894>
- Kavalalı Erdoğan & Koç, Z., T. (2023). Palliative care and spiritual care competency measurement among Turkish Nurses: A scale adaptation study. *Palliative and*

- Supportive Care, 21(6), 1048–1058.
<https://doi.org/https://doi.org/10.1017/S1478951523001542>
- Linda Klopper, H. C., & Phetlhu, D. R., N. S. B. (2024). Development of a conceptual framework for teaching-learning of spiritual care in nursing education. *Curationis*, 47(1). <https://doi.org/https://doi.org/10.4102/curationis.v47i1.2461>
- Machul, M., van Leeuwen, R., Ozga, D., Jurek, K., Boczkowska, S., & Dobrowolska, B. (2022). The level of spiritual care competence of Polish nurses and the psychometric properties of the spiritual care competence scale (SCCS). *BMC Nursing*, 21(1). <https://doi.org/10.1186/s12912-022-00889-z>
- Nascimento de Albuquerque & Limoeiro Pereira, F., R. (2022). Aplicabilidade da spiritual care competence scale: uma revisão integrativa. *Revista Brasileira de Pesquisa Em Saúde/Brazilian Journal of Health Research*, 24(1), 193–204. <https://doi.org/https://doi.org/10.47456/rbps.v24i1.38159>
- Özakar Akça Gülnar, E., & Özveren, H., S. (2022). Spiritual Care Competence of Nurses. *The Journal of Continuing Education in Nursing*, 53(5), 225–231. <https://doi.org/https://doi.org/10.3928/00220124-20220407-05>
- Panczyk Kwiećkowska, L., Dobrowolska, B., Borowiak, E., Dyk, D., Grochans, E., Kozieł, D., Kózka, M., Kulik, H., Lewko, J., McSherry, W., Gotlib, J., & Jaworski, M., M. (2023). Validation Study of the Revised Spirituality and Spiritual Care Rating Scale (SSCRS): A Cross-Sectional Survey in Poland. *Journal of Multidisciplinary Healthcare*, 16, 1439–1453. <https://doi.org/https://doi.org/10.2147/JMDH.S394941>
- Parozzi Terzoni, S., Ferrara, P., Miseroni, F., D’Antuono, A., Di Prisco, L., Mcsherry, W., & Destrebecq, A., M. (2023). Validation of the Italian version of the spirituality and spiritual care rating scale (SSCRS-ita). *International Journal of Nursing Knowledge*, 34(2), 126–132. <https://doi.org/https://doi.org/10.1111/2047-3095.12385>
- Schoot Bartels-Velthuis, A. A., Rodrigues Recchia, D., Frick, E., Büssing, A., & Hoenders, R., M. (2024). Translation and Validation of the Dutch Version of the Spiritual Care Competence Questionnaire (SCCQ-NL). *Religions*, 15(4), 496. <https://doi.org/https://doi.org/10.3390/rel15040496>
- Seid, K., & Abdo, A. (2022). Nurse’s Spiritual Care Competence in Ethiopia: A Multicenter Cross-Sectional Study. *Plos One*, 17(3), e0265205. <https://doi.org/10.1371/journal.pone.0265205>
- Uçar Çelik, S., Karahan, E., Altıntaş, S., & Yücel, M., Ö. (2024). Exploring the relationship between spiritual care and patient advocacy of nurses from generations X, Y and Z working in intensive care clinics: A cross-sectional study. *Intensive and Critical Care Nursing*, 84, 103754. <https://doi.org/https://doi.org/10.1016/j.iccn.2024.103754>
- Ulliya Nurmalia, D., Sulisno, M., Ardani, M. H., & Susilastuti, M. S., S. (2023). Gambaran kompetensi spiritual perawat. *Jurnal Kepemimpinan Dan Manajemen Keperawatan*, 6(1), 27–34. <https://doi.org/https://doi.org/10.32584/jkkm.v6i1.2031>
- Wang, Z., Zhao, H., Zhang, S., Wang, Y., Zhang, Y., Wang, Z., Li, X., Xiao, L., Zhu, Y., Han, G., Yan, Y., Wang, J., Zhang, Y., & Pang, X. (2022). Correlations Among Spiritual Care Competence, Spiritual Care Perceptions and Spiritual Health of Chinese Nurses: A Cross-Sectional Correlational Study. *Palliative & Supportive Care*, 20(2), 243–254. <https://doi.org/10.1017/s1478951521001966>
- Yildirim & Ertem, M., J. G. (2022). Professional quality of life and perceptions of spirituality and spiritual care among nurses: Relationship and affecting factors. *Perspectives in Psychiatric Care*, 58(2), 438–447. <https://doi.org/https://doi.org/10.1111/ppc.12794>
- Yusof Abdul Kadir, N. B., Zakaria, S. M., & Ab Malik, N., F. (2023). Spiritual Assessment Scale Psychometric Testing. *International Journal of Academic Research in Business and Social Sciences*, 13(6). <https://doi.org/https://doi.org/10.6007/IJARBS/v13-i6/17589>